

MOUNTAIN TRIALS RALLY

Merritt, BC

June 17, 2006

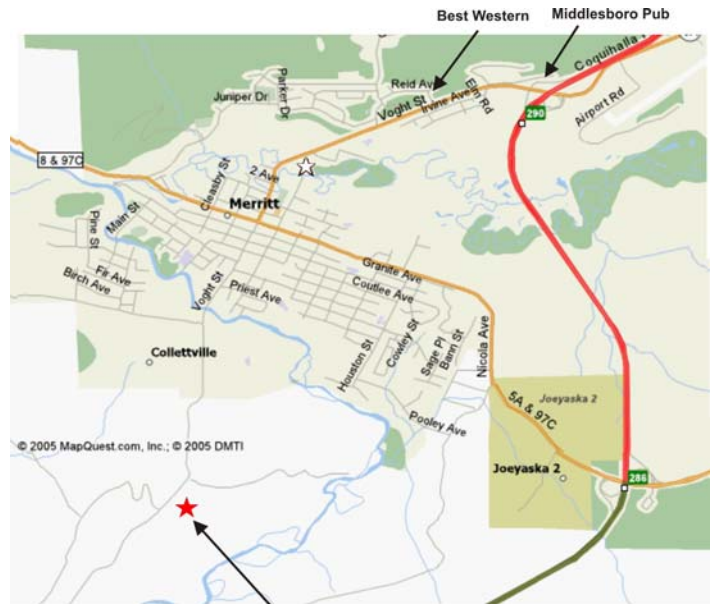


SPECTATOR INFORMATION

Directions to Spectator Point #1:

From Merritt, proceed south along Voght Street.

- After crossing a small bridge, keep to the right (don't drive into the Tolko yard)
- Then turn left onto Midday Valley Road.
- 0.8km from the start of Midday Valley Road, continue straight ahead where it turns to gravel, through the construction.
- 1 km beyond that, follow signs into the spectator parking area on the left.
- Follow the marshals' instructions on where to park.
- The first stage starts at 11:00am.
- The rally cars will pass this point two times, running continuously from 11:00am to 12:30pm.
- Return to Merritt by the way you came.



Spectator #1

Directions to Spectator Point #2:

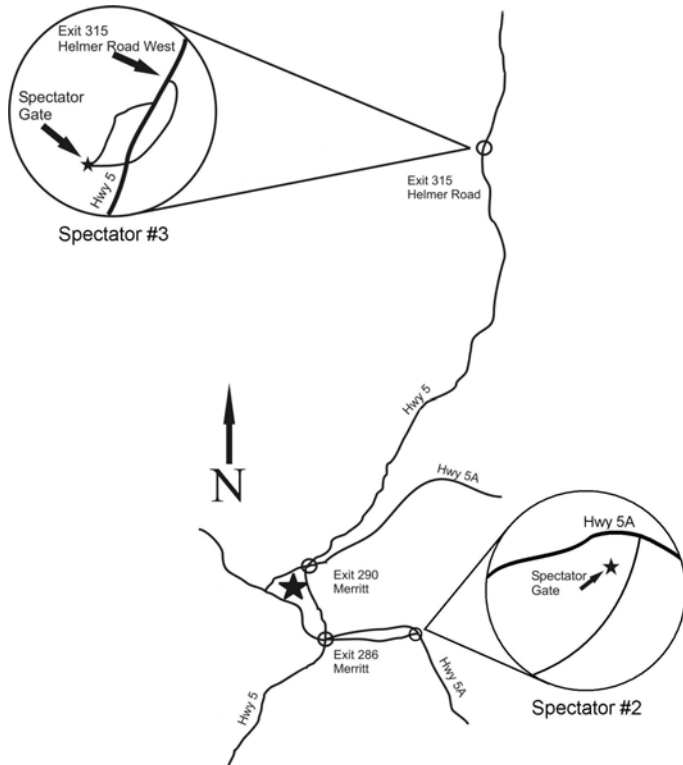
From Merritt:

- Take Highway 97C heading East from the junction with Highway 5 (Interchange Exit 286).
- At the top of the Hill, approx 8km east of Exit 286, turn right and follow the signs.
- Rally cars will be passing this location 3 times between 1:15pm until 4:00pm.

Directions to Spectator Point #3:

From Merritt:

- Take Highway 5 North, towards Kamloops.
- Take Exit 315 (Helmer Road) and follow the road around to the right and under the highway to the west side.
- Proceed straight ahead through the gate and follow marshal's directions to park in the open area on your right, just past the gate.
- There is good viewing 100m from the parking area, but the best viewing area is about a 700m walk into the stage from here.
- Rally cars will be passing this location 3 times between 5:00pm until 8:00pm.



**DO NOT BLOCK TRAFFIC – WATCH FOR TRAFFIC
DO NOT SPEED – SMOKING BAN IN ALL AREAS**